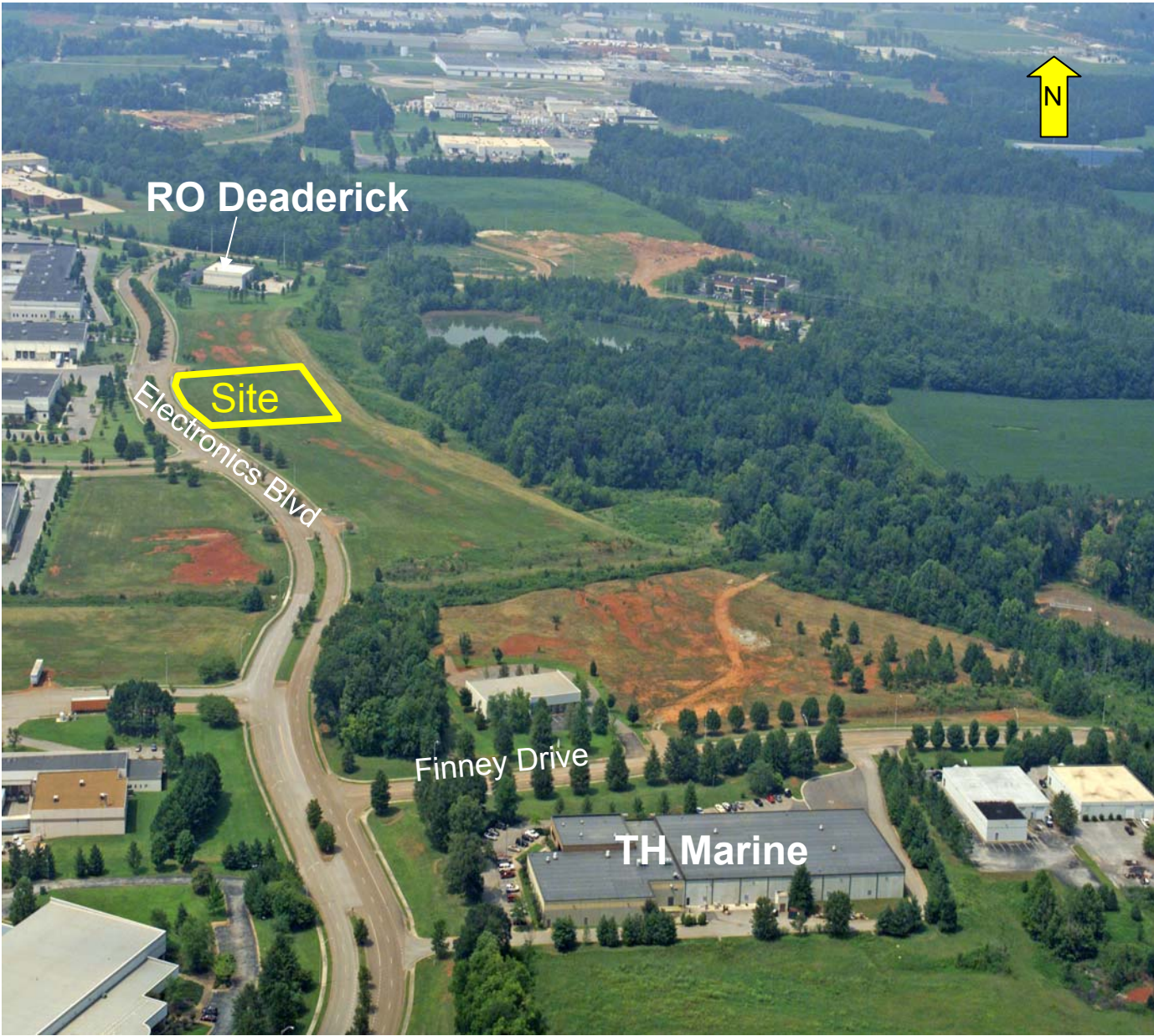




# Jetplex Supplier Park Lot 25 – 4.38 Acre Site Aerial – Site Location



# Huntsville-Madison County Airport Authority

## Available Site Profile Jetplex Industrial Park Huntsville, Alabama

### GENERAL INFORMATION

Ukvg" Pc o g<" Nqv"47"o" Lgvrngz Uwr rnkgt" Rctm"  
C f f t g u u <" Gngevtqpkue" Dnx f 0"  
J w p v u x k n n g . " C N " 5 7 : 4 6 "  
Eqw p v { <" O c f k u q p "  
Y k v j k p " E k v { " N k o k u A " P q "  
O U C <" J w p v u x k n n g . " C N "  
K p f w u v t k c n " R c t m <" L g v r n g z U w r r n k g t " R c t m "  
Y k v j k p " G p v g r t r k u g " \ q p g A " P q "  
R c t m " V { r g <" K p f w u v t k c n " N k i j v " O c p w h c e v w t k p i "  
C u u g o d n { 1 Y c t g j q w u k p i " F l u v t k d w k q p

### TRANSPORTATION

K p v g t u v c v g "		H g f g t c n "			U v c v g "		
J y { "	O k n g u "	J y { "	O k n g u "	H q w t "	J y { "	O k n g u "	H q w t "
V q "	V q "	V q "	V q "	N c p g A "	V q "	N c p g A "	V q "
787"	2"	94"	9"	I g u "	42"	2"	I g u "
87"	.	aaa"	aaa"	aaa"	aaa"	aaa"	aaa"
aaa"	aaa"	aaa"	aaa"	aaa"	aaa"	aaa"	aaa"

T c k n <"  
U r w t <"  
P g c t g u v " U g t x k e g <" 4" o k n g u "  
Y c v g t y c { <"  
P c x k i c d n g A "  
E j c p p g n " F g r v j <"  
P g c t g u v " R q t v " H c e k n v { <" 37" o k n g u "  
C k t <" J w p v u x k n n g " K p v g t p c v k q p c n " C k t r q t v "  
O c l q t " E c t t k g t u <" C o g t k e c p " c p f " C o g t k e c p " G c i n g "  
F g n v c . " E Q O C K T . c p f " C U C "  
W U " C k t " G z r t g u u "  
P q t v j y g u v " C k t n k p m "  
E q p v k p g p v c n " G z r t g u u

### SITE LOCATION

C t g c " q h " U v c v g <"	P q t v j " E g p v t c n "		
N e v k w f g <"			
N q p i k w f g <"			
F k u v c p e g " H t q o " * O k n g u + "			
C v n c p v c "	396"	D k t o k p i j c o "	: 8"
J w p v u x k n n g "	2"	L c e m u q p x k n n g "	736"
O g o r j k u "	434"	O q d k n g "	557"
O q p v i q o g t { "	3 : : "	P c u j x k n n g "	337"
P g y " Q t n g c p u "	576"	V c o r c "	867"

### LOCAL CONTACT

C i g p e { <" J w p v u x k n n g / O c f k u q p " E q w p v { "  
C k t r q t v " C w v j q t k v { "  
C w g p v k q p <" D t q q m u " M t c e m g . "  
F k t g e v q t . " L g v r n g z " K p f w u v t k c n " R c t m "  
O c k n k p i " C f f t g u u <" 3222" I n g p p " J g e t p " D n x f 0 "  
D q z " 4222 : "  
J w p v u x k n n g . " C N " 5 7 : 4 6 "  
V g n g r j q p g <" \* 478 + 994 / ; 5 ; 7 "  
H c z <" \* 478 + 994 / 2527 "  
G / o c k n <" d t q q m u B j u x c k t r q t v \ q t i "  
Y g d u k y g <" y y y 0 j u x c k t r q t v \ q t i

### SITE INFORMATION

C e t g c i g <"	605 : "
R t g f o k p c p v " V g t t c k p <"	H n c v "
U q k n u <"	
E q p v i q w u " C e t g c i g " h q t " G z r c p u k q p A "	[ g u "
E w t t g p v " \ q p k p i <"	C k t r q t v " K p f w u v t k c n "
R t g x k q w u " W u g <"	I t g g p h k n f "
R t k e g " D c u g " T g p v " * c p p w c n <"	
U c n g u " R t k e g <"	& 7 : . 722 l c e t g "
F c v g " S w q v g f <"	E w t t g p v "
U g u o k e " \ q p g <"	3 "
H k t g " T c v k p i <"	5 "

### COMMENTS

### UTILITIES

I c u <"	J w p v u x k n n g " W v k n k v k g u "
U k   g " O c k p <"	60"
Y c v g t <"	J w p v u x k n n g " W v k n k v k g u "
U k   g " O c k p <"	340"
U g y g t <"	J w p v u x k n n g " U g y g t "
U k   g " O c k p <"	
G n g e v t k e <"	J w p v u x k n n g " W v k n k v k g u "
E q o o w p k e c v k q p u " P g v y q t m <"	M O E " H k d g t