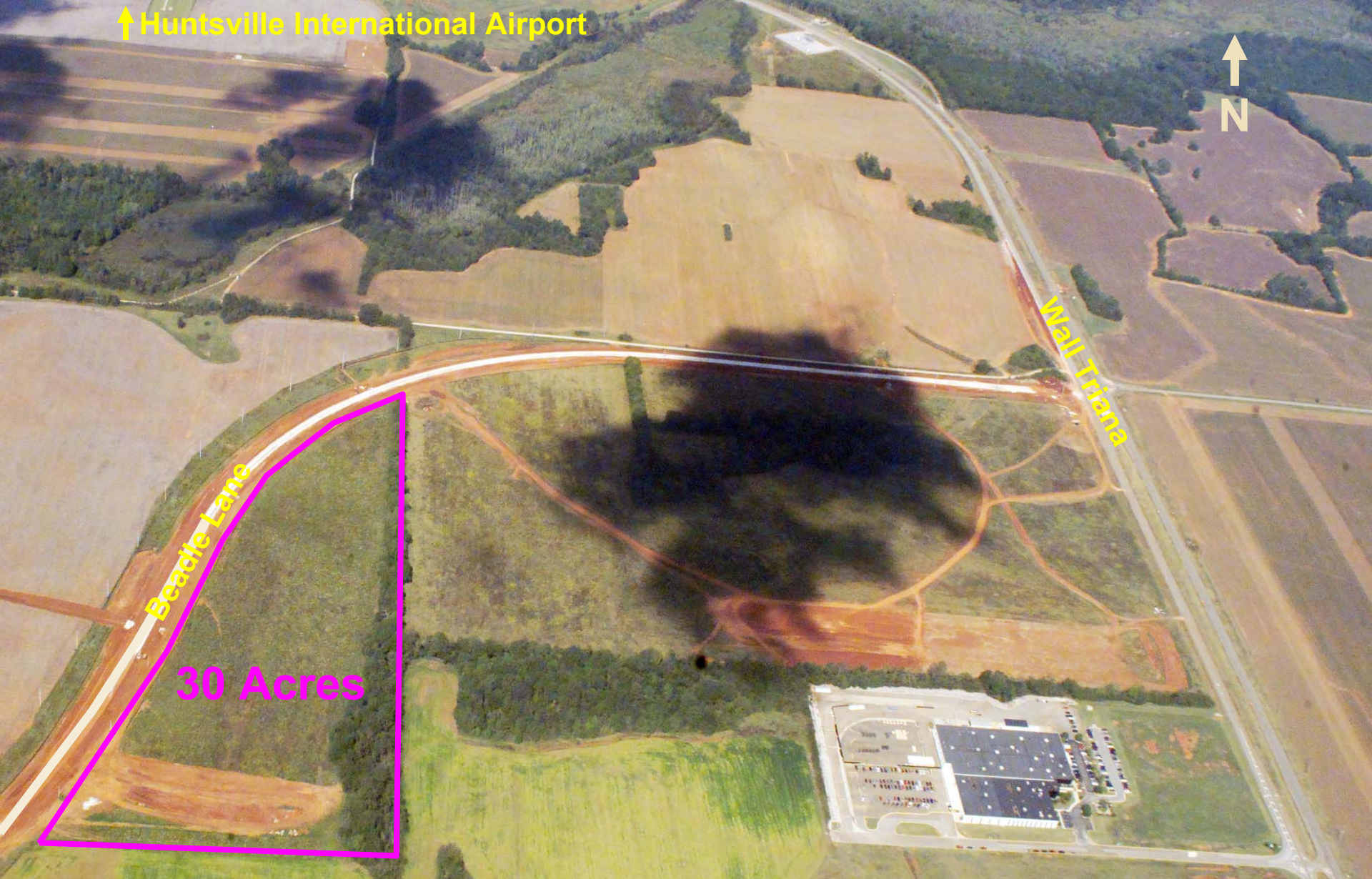


<b>Street Address</b>	Beadle Lane, Jetplex Industrial Park South
<b>For Sale</b>	Yes - \$45,000/acre
<b>For Lease</b>	No
<b>Total Acreage</b>	30
<b>Infrastructure information</b>	
<b>Distance to Major Interstate</b>	I-565 = 4 miles (apx); I-65 = 11 miles (apx)
<b>Distance to Major Highway</b>	Hwy 72 = 6 miles (apx)
<b>Distance to Major Commercial Airport</b>	Huntsville International = 3 miles (apx)
<b>Distance to Port</b>	Decatur = 20 miles (apx)
<b>Rail Access</b>	Proposed
<b>Utilities</b>	
<b>Electric Service</b>	Yes - Huntsville Utilities
<b>Natural Gas If yes, line size</b>	Proposed - Huntsville Utilities
<b>Sewer Service If yes, line size</b>	No
<b>Water Service If yes, line size</b>	Proposed - Huntsville Utilities
<b>Contact Information</b>	
<p><b>Brooks Kracke - Director, Jetplex Industrial Park Huntsville-Madison County Airport Authority 1000 Glenn Hearn Blvd., Box 20008 Huntsville, Alabama 35824</b></p> <p><b>(256) 772-9395 - Phone                      (256) 772-0305 - Fax</b> <b>brooks@hsvairport.org                      www.hsvairport.org</b></p>	

↑ Huntsville International Airport



Beadle Lane

Wall Triana

30 Acres

**Jetplex Industrial Park South – Beadle Lane  
Huntsville, Alabama**

